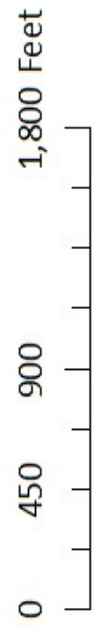
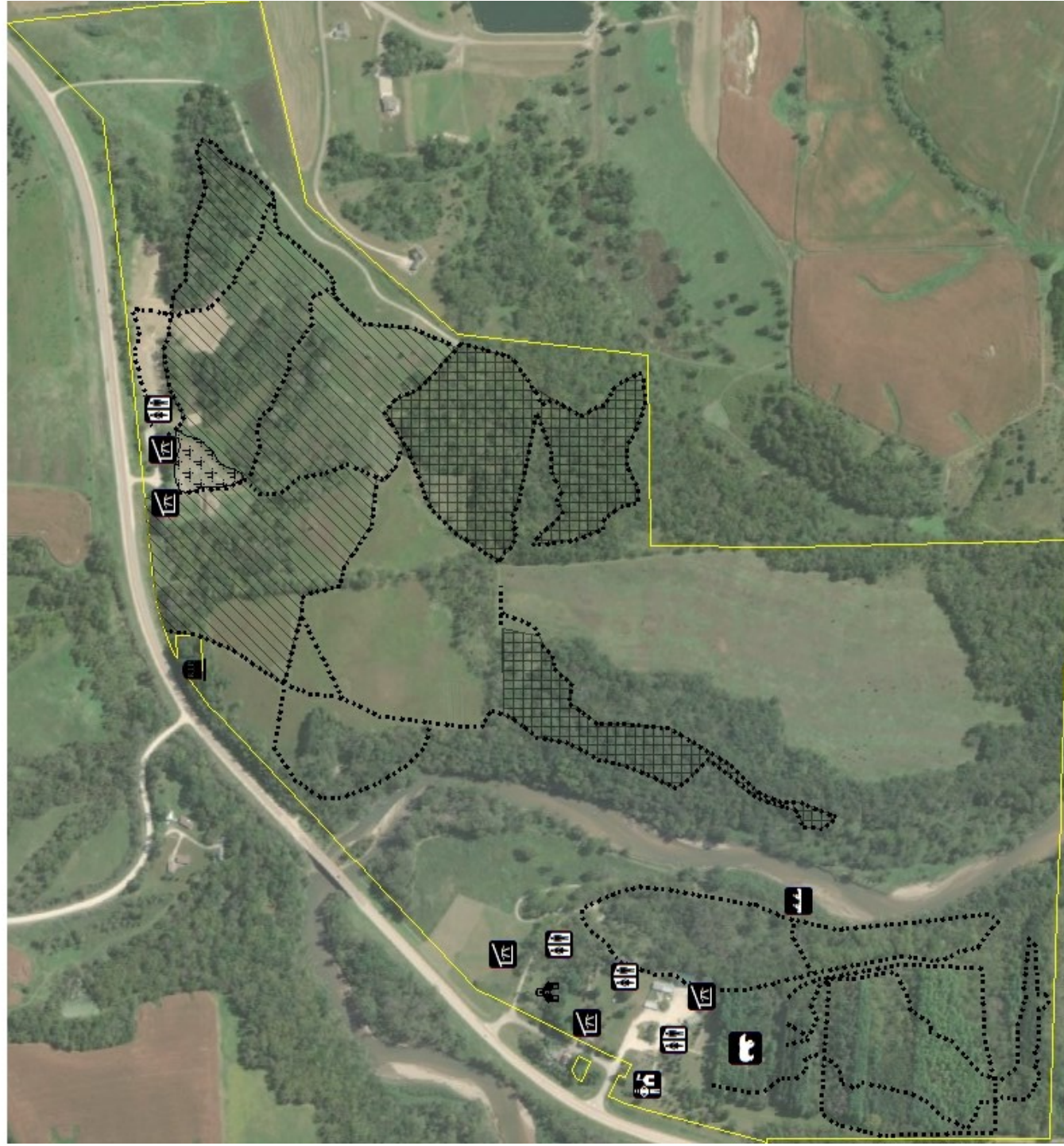


# Osborne Park



## Legend

- |   |                  |   |                  |   |                  |
|---|------------------|---|------------------|---|------------------|
|  | Canoe Landing    |  | Wildlife Exhibit |  | Disc Golf Course |
|  | Pioneer Village  |  | Nature Center    |  | Archery Range    |
|  | Bathrooms        |  | Picnic Shelter   |  | Pond             |
|  | Pioneer Cemetery |  | Hiking Trails    |  | Park Boundary    |

## Hiking

Osborne Park has over six miles of developed hiking trails, ranging from rugged single track to wide-open, retired railroad beds. Trails near the nature center wind through pine forest, hardwoods, and along the Volga River. Trails near the pond meander through beautiful restored prairie and bottomland forest.

## Wildlife Exhibit

Osborne's wildlife exhibit features a small portion of the countless mammal and bird species that call Iowa home. The animals in the exhibit came from licensed rehabilitators, and live at Osborne because they could not safely be returned to the wild. The exhibit is free and open year round.

## Nature Center

The Osborne Nature Center, constructed in 1988, has something for everyone. Downstairs, exhibits on everything from caves to river history to flora and fauna introduce visitors to the natural and human history of Clayton County. Interactive exhibits and live animals will inspire inquiring minds. Upstairs, visitors will find the welcome center and gift shop.

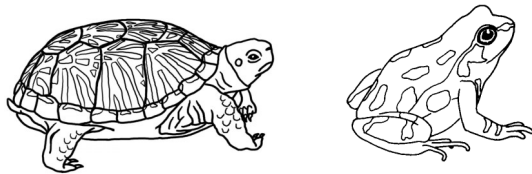


## Archery Range

Osborne has 50+ shooting lanes on the archery range divided between two units. Lanes provide a variety of terrains from wide-open grassland to dense timber. Clayton County Archers host a number of organized shoots on the range each year. During shoots, a variety of moving targets, traditional targets, and 3D animal targets provide something for everyone. The range is also open to the general public, with hanging bags available year-round on several shooting lanes.

## Disc Golf

Near the pond, 18 disc golf holes welcome golfers of all ages and skill levels. The front nine features a nice mix of timber and prairie holes, including some long throws across wide open grassland. The back nine features more technical, wooded shots through hilly terrain.



## On the Water

Osborne provides many opportunities for aquatic recreation. The **Osborne Pond** is stocked by the Iowa DNR, making it a perfect spot for young or beginning anglers. River anglers can cast a line on the **Volga River**, either from shore along constructed fish habitats or by paddling. Osborne makes a great starting or ending spot for paddling adventures, with a maintained access and parking along the old railroad bed (see map).

## Rentals

The Clayton County Conservation Board offers rentals of disc golf discs or snowshoes. Disc golf rental is free with a \$15 deposit, while snowshoe rental costs \$5 per day.

## Reservations

Osborne Park has four shelters which are open to the public, but may be reserved for private groups on a first-come, first-served basis. Near the nature center, visitors may find the **Woodpecker** shelter in the pioneer village, and the **Pinewood** shelter near the wildlife exhibit. Near the Osborne Pond, the **Dock** shelter is an open A-frame, while the **Fireplace** shelter offers a three-walled room with a fireplace perfect for a winter outing.

*Clayton County Conservation*

# Osborne Park Guide



This brochure introduces you to a few of the amenities available at Osborne. You may keep this brochure, or recycle it to the Osborne Trail Kiosk. Thank you!



Scan to make a donation to Clayton County Conservation