




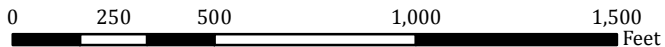


# WKW Conservation Park

54 ACRES  
1597 QUAIL AVE  
PRINT DATE: 10/02/2018

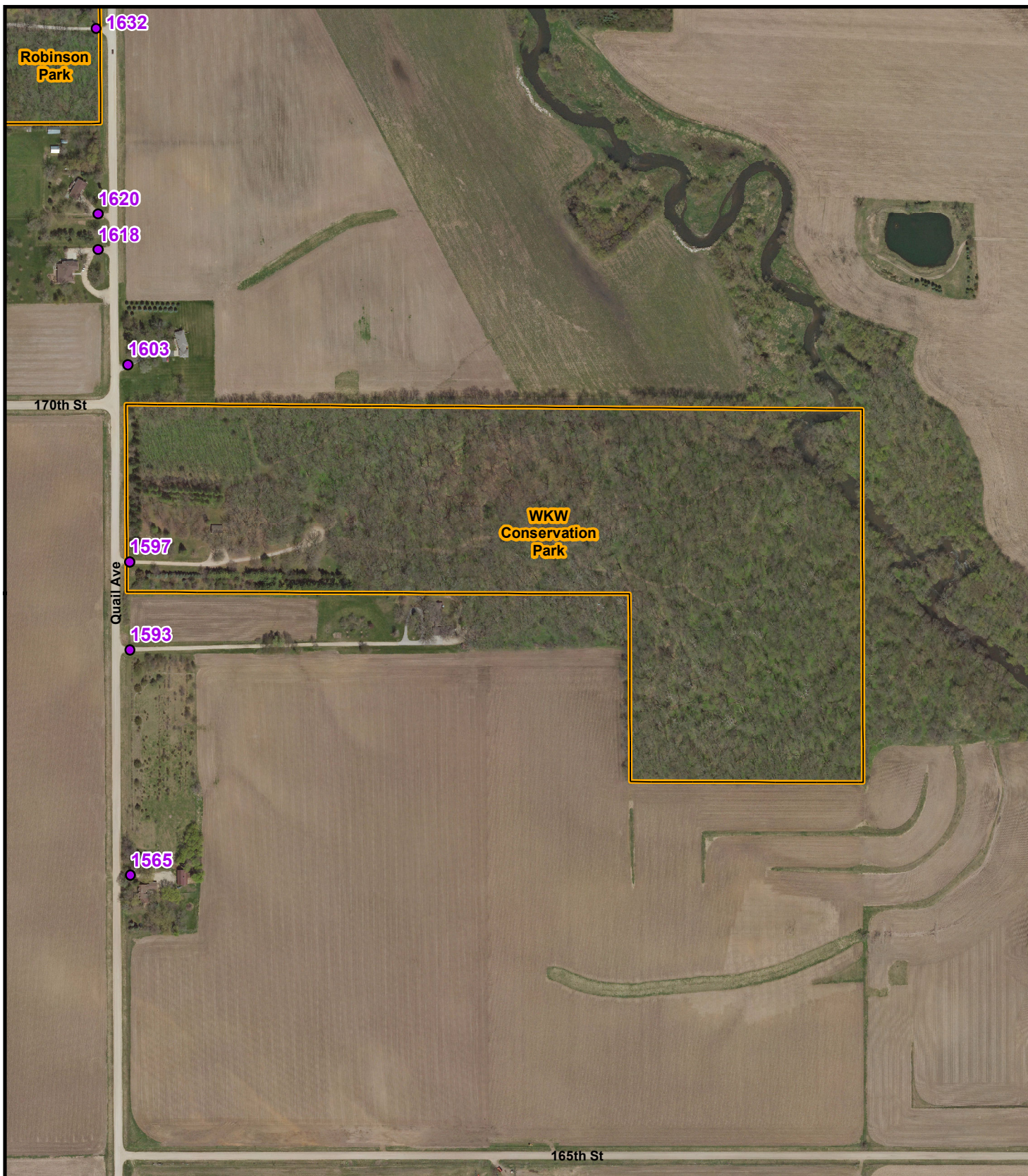


-  Address
-  Conservation Property
-  Corporate Limits
-  Township Line



Red box depicts area shown in detail.

WISNER	RICHLAND	Sheffield ROSS	WEST FORK
Alexander SCOTT	MARION	MOORE Lafayette Coulter	INGHAM Hansell
MORGAN	HAMILTON	REEVE Dows	GENEVA
OAKLAND Popejoy	LEE	GRANT	OSCEOLA Ackley



THIS MAP DOES NOT REPRESENT A SURVEY. NO LIABILITY IS ASSUMED FOR THE ACCURACY OF THE DATA DELINEATED HEREIN, EITHER EXPRESSED OR IMPLIED BY FRANKLIN COUNTY OR ITS EMPLOYEES. THIS MAP IS COMPILED FROM OFFICIAL RECORDS, INCLUDING PLATS, SURVEYS, RECORDED DEEDS, AND CONTRACTS, AND ONLY CONTAINS INFORMATION REQUIRED FOR COUNTY PURPOSES. SEE THE RECORDED DOCUMENTS FOR MORE DETAILED LEGAL INFORMATION. THE AERIAL PHOTOGRAPHY WAS FLOWN BY FRANKLIN COUNTY IN SPRING 2017. MAP CREATED BY THE FRANKLIN COUNTY GIS DEPARTMENT AT 641.456.6045 OR GIS@CO.FRANKLIN.IA.US.