



# CAMPING CABIN INFORMATION SHEET FOR 12 PERSON BIN CABIN

**LOCATION:** Grain Bins at Dog Creek Park, Sutherland, IA

**SIZE:** 1280 square feet of living area in a two-story bin shaped cabin with a second level wrap around deck

## **FURNISHINGS and CAPACITY**

The cabin has six sets of queen-sized beds that comfortably sleep twelve people. The cabin includes electricity, microwave, refrigerator and stove, sink in kitchen, kitchen table with seating for six, couch, two arm chairs, Wi-fi, TV with cable, heat and air conditioning. This cabin has a handicap accessible bathroom with complete facilities including a walk in shower. Three picnic tables (one handicapped accessible) and one fire ring with grill are provided on the patio. The cabin renters provide all personal items such as linens, blankets, pillows, cooking and eating utensils, etc.

## **RESERVATIONS**

1. Reservations can be made **2 years in advance**. Maximum stay is **14** consecutive nights.
2. Reservations will be made online at My County Parks  
<https://www.mycountyparks.com/County/OBrien/Facility/Search.aspx>
3. **NO** reservations will be accepted from the telephone answering machine or e-mail.

## Rental Contract Agreement

By your agreement with these terms and conditions, you represent that you are 21 years or older, you will be present during your stay and that you are authorized to make this reservation on behalf of the group you have listed. You agree to assume full financial responsibility for the acts, negligence or omissions of the member of your group while utilizing said facilities. Additionally, you agree that you have read and understand the cancellation and refund policies concerning this reservation and have also read and understand the cabin rental rules and information.

You are reserving a facility from the O'Brien County Conservation Board. All county park rules and state laws are enforced. Park Rules and regulations are posted. Park Officers are authorized to refuse rental privileges and to rescind any and all reservations for cause. Board may take legal action necessary for non-compliance of any rules and regulations or to recover damages to county property. Contact the O'Brien County Conservation Board Office at 712-295-7200 or [occb@obriencounty.iowa.gov](mailto:occb@obriencounty.iowa.gov) if you have any questions about park rules, policies or special requests.

O'Brien County Conservation reserves the right to enter any cabin or bin at any time in case of emergency, maintenance, non-compliant rental issues or security problems.

## Rental Fee (per cabin)

**\$150.00** per night for Sunday-Saturdays plus 5% excise tax & fees. There is a two [2] night minimum stay for all reservations. All payment is due at time of reservation.

## Refund Policy

All reservations with O'Brien County Conservation Board facilities are FINAL and NON-REFUNDABLE. If the O'Brien County Conservation Board is unable to provide facility in operable condition for the date of your event or National Weather Service advise no travel a full refund minus fees will be issued.

## Cancellation Policy

The O'Brien County Conservation Board, in the provisions of services and facilities to the public, does not discriminate against anyone on the basis of race, color, sex, creed, national origin, age, or disability. If anyone believes he or she has been subjected to such discrimination, he or she may file a complaint alleging discrimination with the O'Brien County Conservation Board or the Office of Equal Opportunity, US Dept. of Interior, Washington DC 20240. If you require special assistance for participation in our programs and services or to request information in an alternative format, please call the O'Brien County Conservation Board at (712) 295-7200.

Should you chose to cancel a reservation, you will forfeit 100% of all fees paid. You may call the Board Office up to 14 days before the reservation and request a date change, one time, with a new reservation in the same calendar year.

**CHECK IN & CHECK OUT TIMES** Renters may check in to the cabins at 2:00 p.m. Renters are required to check out by 11:00 a.m.

**Pets/Dogs**

The rentals 12W, 6W, Sky View and Corn Bin are considered pet friendly, persons with severe allergies should be aware that pets are allowed inside the rentals. An additional pet fee of \$25 per pet/per night will be paid when making your reservation. All pet waste must be bagged and trashed. Pets cannot be left loose and or unattended inside or outside of the cabin. Up to two dogs are allowed and “pet” is defined as a dog.

**Cabin Access**

The door is equipped with a keyless entry pad. The park ranger will activate the facility with the code that was selected at the reservation time. It is your responsibility to ensure the door and windows are shut and locked upon your departure. Parking is available at the cabins with extra space in the parking lots.

**Clean up & Check Out**

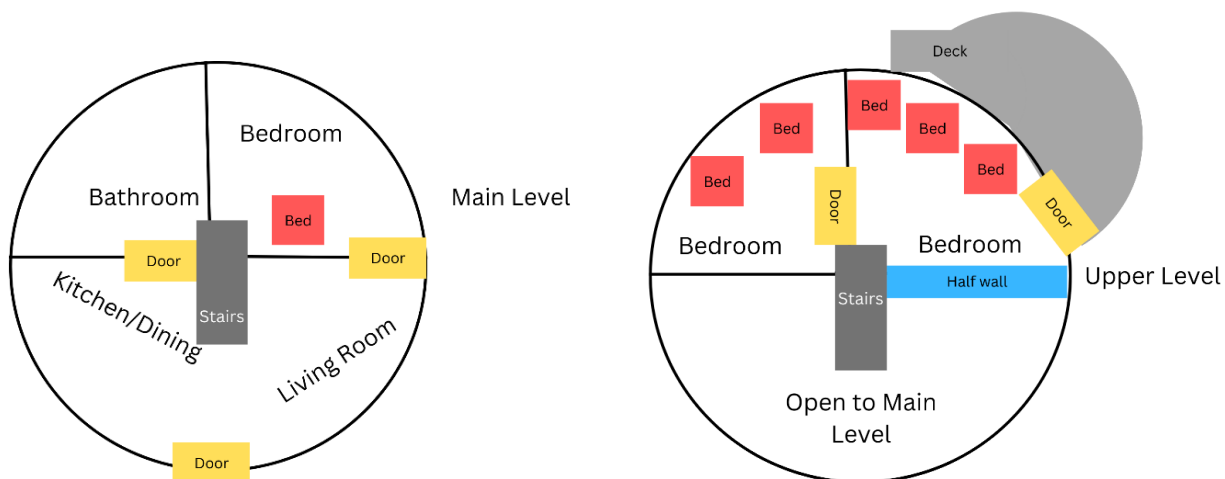
Please leave the facility in the same condition as when you arrived. All trash needs to be taken out. A quick cleaning list is provided inside of the rental.

**Other Regulations**

- A. No keg beer allowed in the cabins (or in the park).
- B. No smoking allowed in the cabins.
- C. No tents or other camping units will be allowed at the cabin sites.
- D. Non-registered guests must leave the cabin (and the park) by 10:30 PM.
- E. All O’Brien County Conservation Board rules and regulations apply while using O’Brien County Conservation Facilities.
- F. The O’Brien County Conservation Board reserves the right to have its employees enter the cabins in cases of emergency, maintenance, or security problems.

**FOR MORE INFORMATION**

Please contact the O’Brien County Conservation Board, 4931 Yellow Avenue, Peterson, IA 51047 (712) 295-7200.



The O’Brien County Conservation Board, in the provisions of services and facilities to the public, does not discriminate against anyone on the basis of race, color, sex, creed, national origin, age, or disability. If anyone believes he or she has been subjected to such discrimination, he or she may file a complaint alleging discrimination with the O’Brien County Conservation Board or the Office of Equal Opportunity, US Dept. of Interior, Washington DC 20240. If you require special assistance for participation in our programs and services or to request information in an alternative format, please call the O’Brien County Conservation Board at (712) 295-7200.