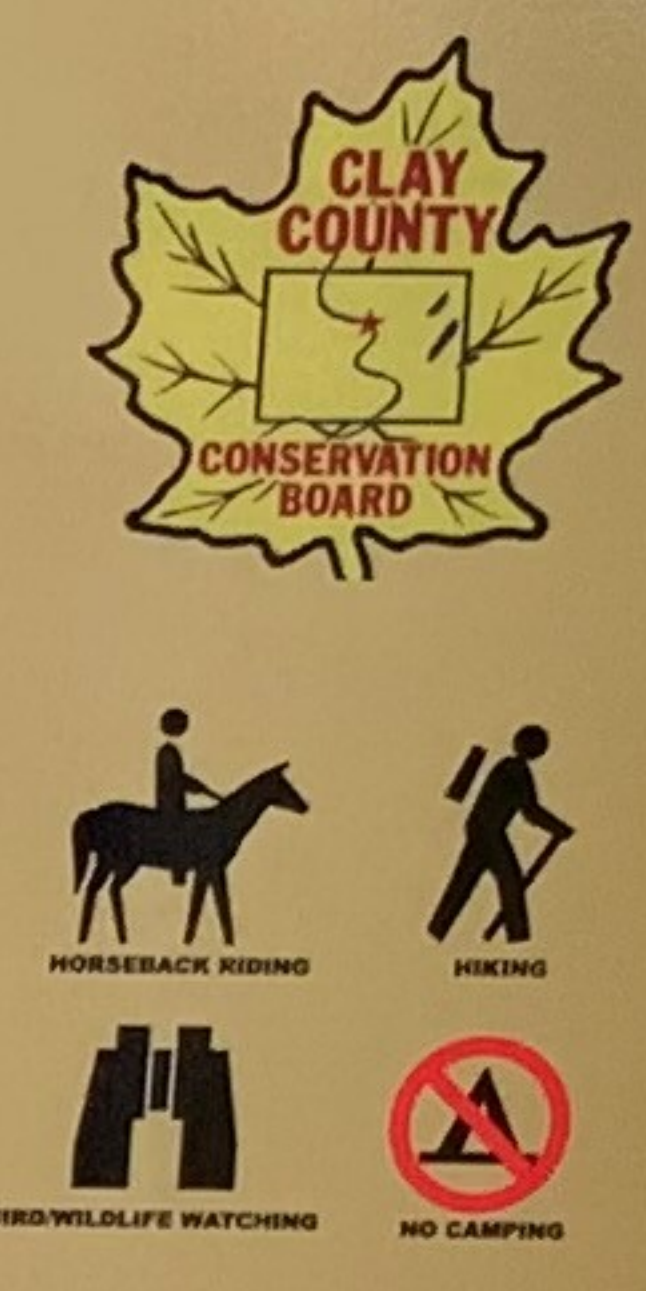


BERTRAM RESERVE



TRAIL RULES
TRAIL USE IS A PRIVILEGE
DAY USE ONLY - CLOSED 10PM - 6AM

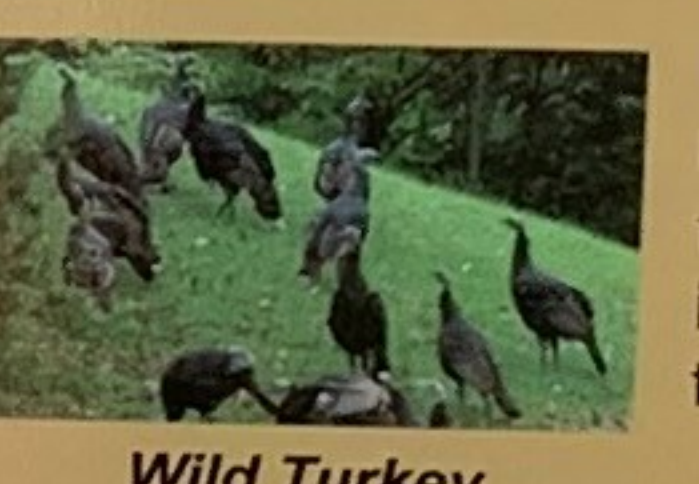
- Horseback riding is closed from Oct. 1st to May 15th
- Leave no trace
- Stay on groomed trails
- Trails will be closed if they are not fit to be used
- Do not disturb wildlife
- Respect private property
- No motorized vehicles
- Dogs should be under control at all times



Any questions about trail closures, please contact the CCCB office at 712-262-2187 or claycountyparks.com



Oak Savanna



Wild Turkey

Bertram Reserve Info

Welcome!

Bertram Reserve offers an opportunity to explore some of the most beautiful scenery in this area. The reserve is 240 acres of oak savanna, prairie, and woodland ecosystems. Bird watching, hiking, equestrian trails as well as primitive weapon hunting for deer, squirrel, and wild turkey are activities to be enjoyed at Bertram Reserve. Experience the incredible diversity of plants, birds, and wildlife unique to this area.

ENJOY BERTRAM RESERVE TRAILS

SUPPORT FOR BERTRAM TRAILS PROVIDED BY:
 IOWA LAKES ELECTRIC COOPERATIVE CLAY COUNTY CONSERVATION BOARD
 BACK COUNTRY HORSEMEN OF IOWA PRIVATE DONATIONS