

# GYPSUM CITY OHV Park

2390 Mill Road, Fort Dodge, Iowa 50501



# WELCOME

to the Gypsum City Off-Highway Vehicle (OHV) Park. Located southeast of the City of Fort Dodge, Iowa the park serves as a destination for All-Terrain Vehicles (ATV's), dirt bikes, side by sides (ORV'S) and snowmobile riders, as well as other outdoor enthusiasts from across Iowa and the Midwest. Gypsum City OHV Park is the largest OHV Park in Iowa and is located on 800 acres of land formerly mined for gypsum. Currently the park offers over 60 miles of trail riding, tracks for all levels and numerous fishing ponds located throughout the park. Riders of all levels can enjoy the varied terrain from flat wide trails to tight winding single track trails.

## FACILITIES

The Gypsum City OHV Park has a variety of facilities located throughout the park. Current amenities at the park include an open shelter with picnic tables and grill, loading dock, men and women's restroom, 1.5 mile MX track, a beginners track (119cc max), a circle track, fishing ponds, and over 60 miles of trails accommodating ATV's, Motorcycles and ORV's.

## CAMPING

The Gypsum City Campground is located within the park. The campground consists of a total of 33 camping sites, full service restroom with showers and a park office. There are 15 full-service sites which include water, electricity and sewer hookup and 18 sites which include water and electricity only. Each site consists of a drive

through camping pad, fire ring and picnic table. There is also a dump station located within the campground. Firewood is available for purchase at posted times. The campground has several trail access points in which campers can access the park's trails from the campground. Certain sites are reserveable, please visit [mycountyparks.com](http://mycountyparks.com) for additional information or to make a reservation.

## PARK HISTORY

In 1852 geologist David Dale Owen uncovered large deposits of Gypsum along the Des Moines River Valley in the Fort Dodge Area. This discovery would uncover one of the largest deposits of Gypsum in the country. Since then people in the area have been utilizing this mineral to produce a variety of everyday products. Gypsum is a soft rock that when refined is most commonly used to produce drywall. Other products include toothpaste, chalk, and is also used as a soil conditioner to grow vegetables. When most of the Gypsum had been mined and processed, the mining companies restored the ground to its previous condition by planting trees and filling in voids. In 2006 a local rider club named "The

Webster County Wheelers" partnered with the Iowa Department of Natural Resources and the local mining companies to provide a legal riding opportunity for enthusiasts. The initial area consisted of 220 acres and approximately 15 miles of trail in what is now Phase 1 of the park. In 2011 more land became available and the park was expanded to include Phases 2 and 3. During this time the park leadership role would change hands to the Webster County Conservation Board. Currently the park consists of almost 800 acres, over 60 miles of trail and a 33 site campground. There is still opportunity for the park to grow in size as mining activity continues in the area.

## NATURAL RESOURCES

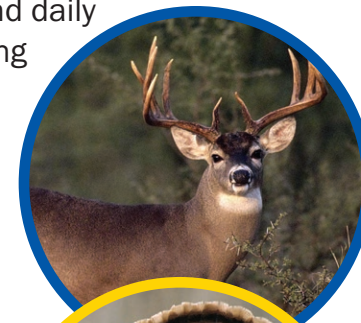
Even though the entire property of the Gypsum City OHV Park was once mined, a lot of time and money has been spent trying to restore the land to its previous condition. Some of the wildlife you can expect to see at the park includes white-tailed deer, wild turkeys, pheasants, beavers, reptiles and a variety of songbirds. Several fishing ponds throughout the park provide good fishing opportunities throughout the year. Anglers have been known to catch largemouth bass, crappie, bluegill and perch. The ponds also provide a great habitat for nesting Canada

geese and a resting area for a variety of waterfowl in the spring and fall. Remember all state fishing laws apply including size and daily limits and there is no hunting within the park. Raspberry bushes and morel mushrooms are also found throughout the park.

## RIDER RESPONSIBILITIES

OHV recreation is a great way to enjoy the outdoors but there is a risk and responsibilities to operating these machines. Some things to consider before you ride:

- Make sure someone knows where you are and what time you plan on being back.
- Always bring a cell phone and put it in a secure pocket on you, not your machine.
- Be sure to wear protective gear including helmet, gloves, boots and eye protection.
- Always try to remember what trail number you are on, in the event of an emergency this will save time for first responders to find you.

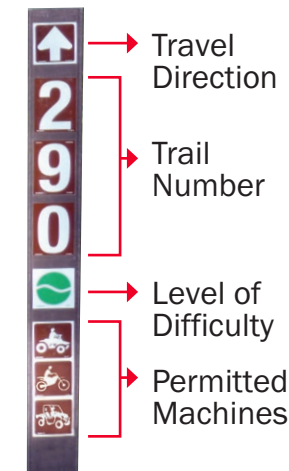


- All operators, no matter the age, should take a safety course and become familiar with your machine before riding.
- Be aware and courteous of other riders and wildlife.
- Know the rules of the park and obey all posted signs.
- Stay on posted trails.

PLEASE STAY ON  
THE DESIGNATED ROUTES  
THE FUTURE OF THIS TRAIL  
SYSTEM DEPENDS ON YOU

## SIGNAGE

Trailhead signs are located at the beginning of each trail and at intersections. These signs list the direction of travel, trail number, difficulty rating and which machines are allowed. The intersection ahead markers are located ahead of an intersection which gives the operator time to slow down and check for cross traffic. Please note what types of machines are allowed on any particular trail. It is prohibited to take a machine that is not allowed on a trail. This is for your safety and to protect the integrity of the trail.



**JUNCTION MARKER**  
A black on yellow intersection symbol indicates a trail junction ahead.

## PARK CLOSURE

The soil composition of the park consists of primarily rock and clay from previous mining activities. Therefore, during periods of heavy rainfall or inclement weather, the park or certain phases of the park may be closed to prevent trail damage. You can check to see if the park is open by visiting the webpage [www.iowadnr.gov/OHVclosures](http://www.iowadnr.gov/OHVclosures). If you are planning on making a trip to the park or make reservations in the campground be sure to check the weather forecast in advance.

## REQUIRED TO RIDE

- ✓ IOWA DNR REGISTRATION
- ✓ SOUND 96db MAX
- ✓ ATV EDUCATION CERT. AGE 12-17
- ✓ HELMETS



**Gypsum City OHV Park**  
2390 Mill Road  
Fort Dodge, Iowa 50501

## For more information, contact:

Webster County Conservation  
1415 Nelson Avenue  
Fort Dodge, Iowa 50501  
515-576-4258  
[www.mycountyparks.com/county/webster.aspx](http://www.mycountyparks.com/county/webster.aspx)  
[www.fortdodgecvb.com](http://www.fortdodgecvb.com)

Iowa Department of Natural Resources  
Wallace State Office Building  
502 East 9th Street, 4th Floor  
Des Moines, Iowa 50319-0034  
515-725-8200  
[www.iowadnr.gov/OHV](http://www.iowadnr.gov/OHV)



## PARK RULES

- Machines registered in Iowa must have a current Iowa registration decal affixed to their machine and the registration certificate must be carried on the operator or machine.
- Machines registered in another state must have their valid registration decal and IDNR Nonresident User Permit affixed to the machine.
- Helmets are required by both operator and passengers on riding areas, parking lots and within the campground.
- Passengers are only allowed on machines which are designed by the manufacturer to carry a passenger. Riding double on all other machines is prohibited.
- Users of the park must comply with all posted signs.
- Riding hours are from sunrise to sunset, this includes the campground.
- Riding off of the marked trails is strictly prohibited.
- Operation in a careless, reckless, or negligent manner or at excessive speeds is prohibited.
- Operation of a machine while under the influence of alcohol or narcotics is prohibited.
- Sound-level limits are enforced. Aftermarket products may not exceed 96 decibels.
- Consumption or possession of alcohol in the park, including the parking lot, is prohibited. Only in the campground is possession of alcohol allowed.
- Pets are not allowed in designated riding areas. They are permitted in parking areas and campground only.
- ATV Operators age 12 through 17 must carry a valid education certificate.
- ATV Operators under the age of 12 must be under direct supervision of an adult with a valid driver's license.
- ORV Operators must possess a valid driver's license.
- Passengers in ORV's must wear seat belts and helmets at all times.
- An ORV passenger must be able to place both feet flat on the floorboard with their back resting against the back of the seat.
- This is not a complete list of all regulations, please reference the Off-Highway Vehicle Reference Guide for a more complete listing of rules and laws.

# FORT DODGE

Webster County, Iowa



## TRAIL MAP LEGEND

- Park Boundary
- ORV Trails
- Motorcycle Trails
- Mudding Area
- ATV Trails
- Easiest
- More Difficult
- Most Difficult
- Restroom Facility
- Shower Facility
- Picnic Shelter
- Parking

