





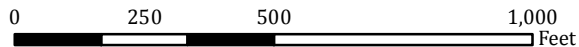


# Handorf Roadside Park

4 ACRES  
2470 US HWY 3  
PRINT DATE: 10/02/2018



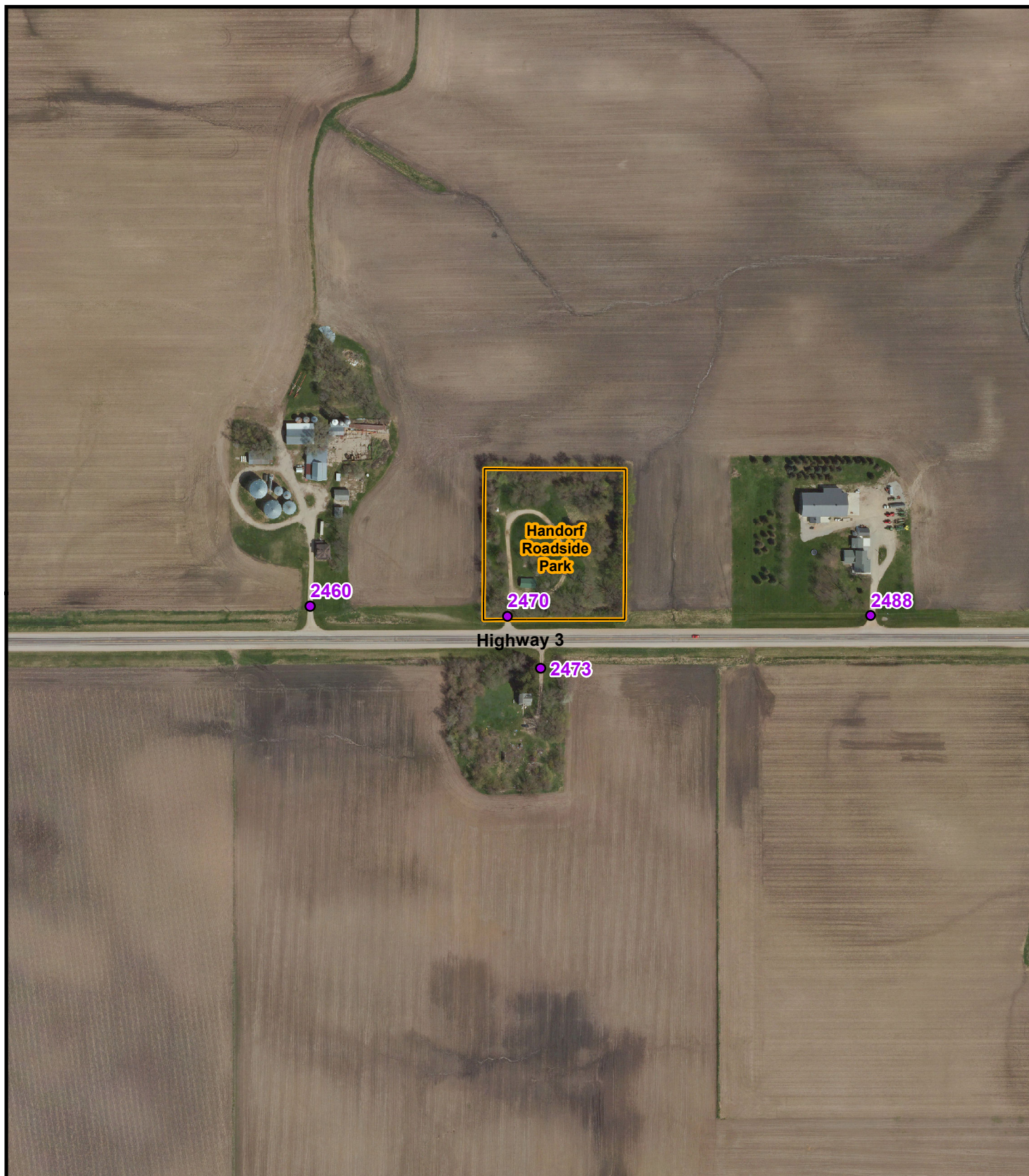
-  Address
-  Conservation Property
-  Corporate Limits
-  Township Line



Red box depicts area shown in detail.

WISNER	RICHLAND	ROSS	WEST FORK
Alexander	SCOTT	MARION	INGHAM
Doys	LaFleur	Mo'tt	Hansell
MORGAN	HAMILTON	REEVE	GENEVA
OAKLAND	POPEJOY	LEE	GRANT
			OSCEOLA

Ackley



THIS MAP DOES NOT REPRESENT A SURVEY. NO LIABILITY IS ASSUMED FOR THE ACCURACY OF THE DATA DELINEATED HEREIN, EITHER EXPRESSED OR IMPLIED BY FRANKLIN COUNTY OR ITS EMPLOYEES. THIS MAP IS COMPILED FROM OFFICIAL RECORDS, INCLUDING PLATS, SURVEYS, RECORDED DEEDS, AND CONTRACTS, AND ONLY CONTAINS INFORMATION REQUIRED FOR COUNTY PURPOSES. SEE THE RECORDED DOCUMENTS FOR MORE DETAILED LEGAL INFORMATION. THE AERIAL PHOTOGRAPHY WAS FLOWN BY FRANKLIN COUNTY IN SPRING 2017. MAP CREATED BY THE FRANKLIN COUNTY GIS DEPARTMENT AT 641.456.6045 OR GIS@CO.FRANKLIN.IA.US.