







Long Spur Habitat Area

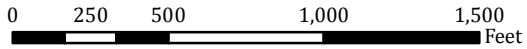
102 ACRES

1453 LARK AVE

PRINT DATE: 10/02/2018

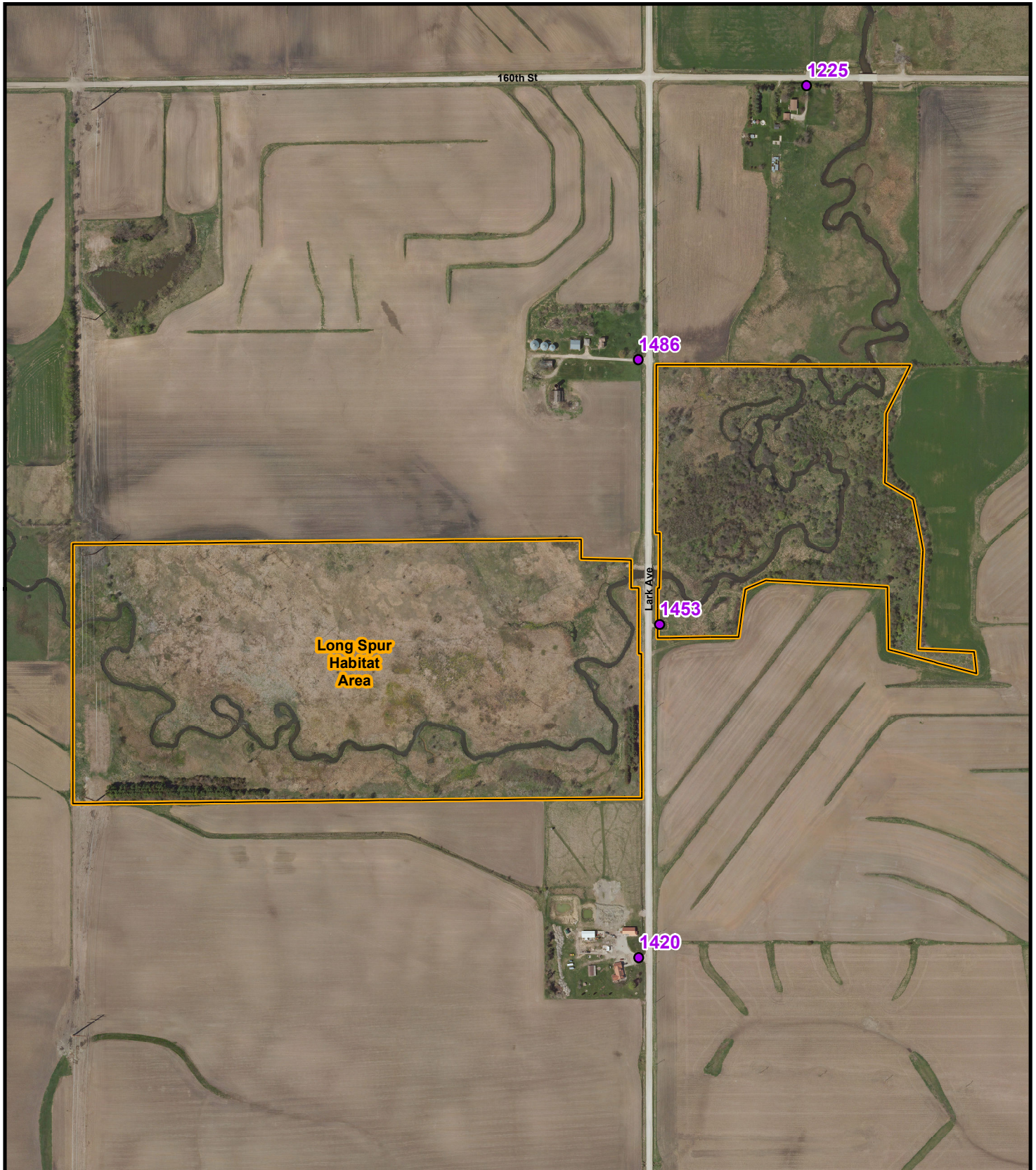


-  Address
-  Conservation Property
-  Corporate Limits
-  Township Line



Red box depicts area shown in detail.

WISNER	RICHLAND	Sheffield ROSS	WEST FORK
Alexander SCOTT	MARION	MOTT	INGHAM
Laumer Coulter	Hampton	Hansell	
MORGAN	HAMILTON	REEVE	GENEVA
Dows		Geneva	
OAKLAND	Popejoy	LEE	GRANT
			OSCEOLA
			Ackley



THIS MAP DOES NOT REPRESENT A SURVEY. NO LIABILITY IS ASSUMED FOR THE ACCURACY OF THE DATA DELINEATED HEREIN, EITHER EXPRESSED OR IMPLIED BY FRANKLIN COUNTY OR ITS EMPLOYEES. THIS MAP IS COMPILED FROM OFFICIAL RECORDS, INCLUDING PLATS, SURVEYS, RECORDED DEEDS, AND CONTRACTS, AND ONLY CONTAINS INFORMATION REQUIRED FOR COUNTY PURPOSES. SEE THE RECORDED DOCUMENTS FOR MORE DETAILED LEGAL INFORMATION. THE AERIAL PHOTOGRAPHY WAS FLOWN BY FRANKLIN COUNTY IN SPRING 2017. MAP CREATED BY THE FRANKLIN COUNTY GIS DEPARTMENT AT 641.456.6045 OR GIS@CO.FRANKLIN.IA.US.