

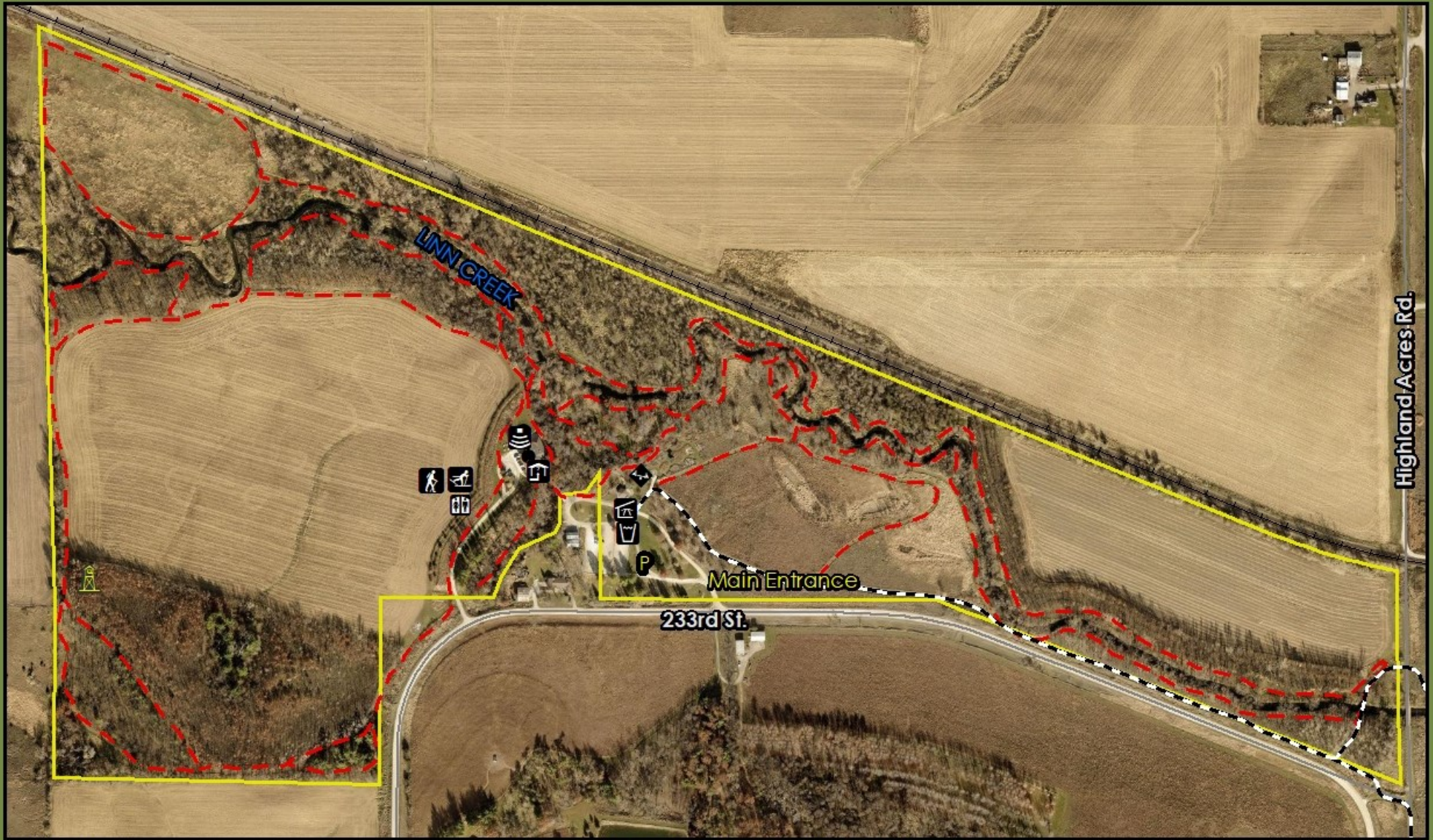


22 Grimes Farm Conservation Center & Recreation Area

- Drinking Water
- Hiking Trail
- Linn Creek Bike Trail
- Conservation Center
- Picnic Shelter
- Leonard Grimes Memorial Amphitheater

2359 233rd St.
Marshalltown, IA 50158
Operating Hours
5:30 a.m. - 10:30 p.m.
162 Acres

- Parking
- Playground
- Restrooms
- Wildlife Observation
- X-C Skiing
- Observation Tower (Mildred Hach Grimes)



Hiking trails provide access to the forests, wetlands, prairies, and crop fields. Hours are 5:30 a.m. to 10:30 p.m., year round.

Trail Regulations

- Pets must be kept on leash (maximum of 6') and controlled.
- No motorized vehicles.
- No firearms, no hunting.
- Use the right side of the trail unless otherwise designated.
- Pass on the left, announce when passing.
- Ride/skate at a safe speed. Wear helmet or headgear.
- For your safety, headphones are discouraged.
- Remove all pet feces from trail and dispose of properly.
- No horseback riding

Mildred Hach Grimes Observation Tower

The tower sits on the highest elevation point of the Grimes Farm. The main viewing platform, large enough to hold groups of 12 – 15, stands 30 feet above ground level. The view to the east overlooks the Marshalltown skyline and the Linn Creek Corridor as it winds its way to the Iowa River. Westward, the tower immediately overlooks pasture ground and further in the distance lays the flat landscape of Iowa that was carved out 14,000 years ago by glaciers with ice up to a mile thick. On a clear day one can view miles into Story County.



Grimes Farm Trails

Marshall County Conservation Board
 2359 233rd St
 Marshalltown, IA 50158
 (641)752-5490
 Email: mccb@marshallcountya.gov

Recreational area hours are:
 5:30 a.m. to 10:30 p.m.
 Area is open year round.



Trail	Distance
Beaver Loop	.17 miles
Boardwalk Loop	.26 miles
Deer Trail	1.12 miles
Misc. Trail	.25 miles
Prairie Pothole Loop	.49 miles
Tower Loop	1.3 miles
Windmill Loop	.37 miles

Total Distance **3.91 miles**

Nature Center to Observation Tower
approximately .5 miles

www.marshallcountya.gov/501/Conservation

