




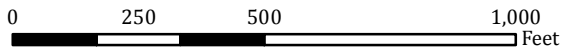


# Popejoy Conservation Park

61 ACRES  
313 DOGWOOD AVE  
PRINT DATE: 10/02/2018

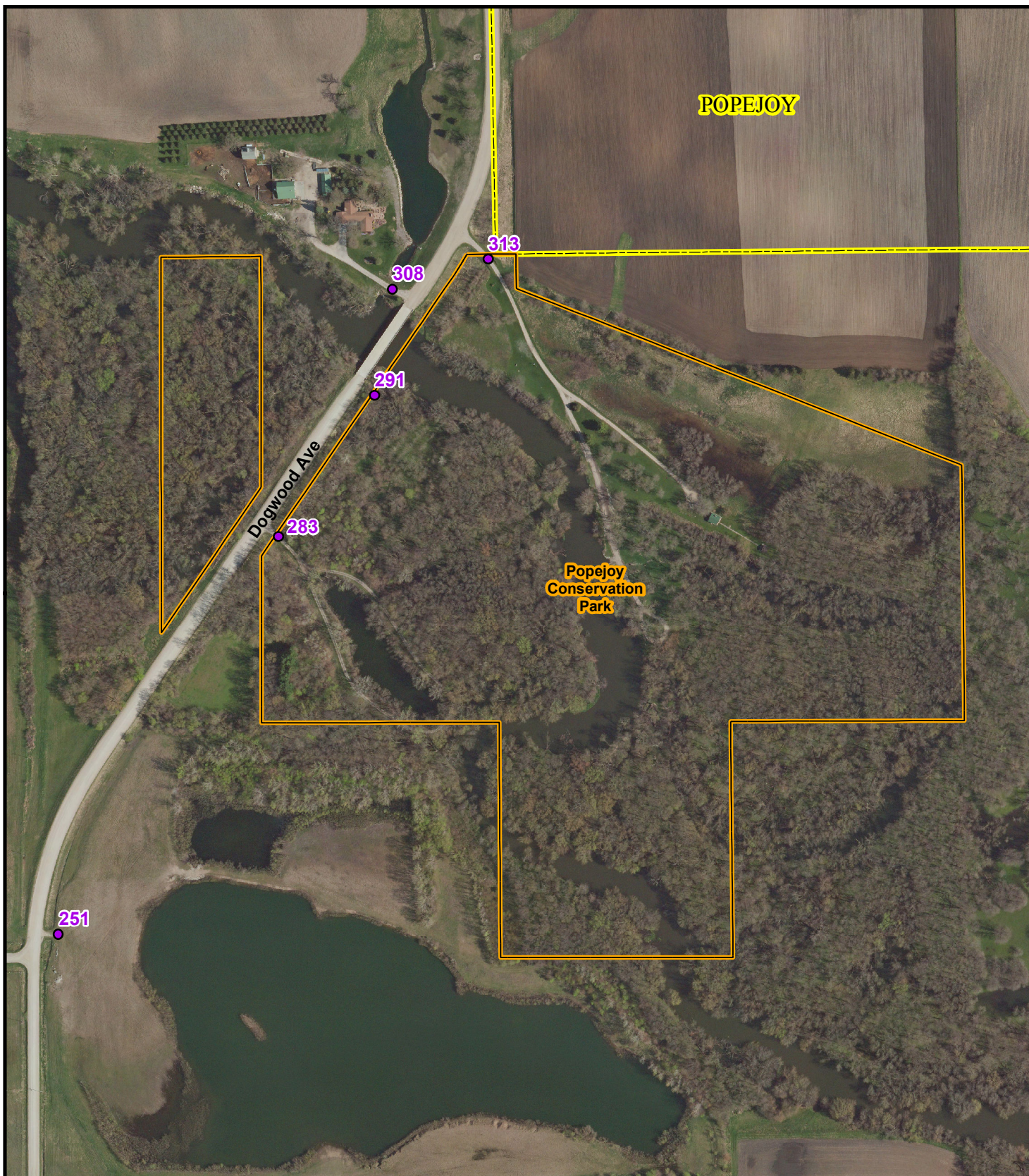


-  Address
-  Conservation Property
-  Corporate Limits
-  Township Line



Red box depicts area shown in detail.

WISNER	RICHLAND	Sheffield	WEST FORK
Alexander	MARION	MOFF	INGHAM
SCOTT	LaFleur	Hampton	Hansell
MORGAN	HAMILTON	REEVE	GENEVA
OAKLAND	LEE	GRANT	OSCEOLA
Popejoy			Ackley



THIS MAP DOES NOT REPRESENT A SURVEY. NO LIABILITY IS ASSUMED FOR THE ACCURACY OF THE DATA DELINEATED HEREIN, EITHER EXPRESSED OR IMPLIED BY FRANKLIN COUNTY OR ITS EMPLOYEES. THIS MAP IS COMPILED FROM OFFICIAL RECORDS, INCLUDING PLATS, SURVEYS, RECORDED DEEDS, AND CONTRACTS, AND ONLY CONTAINS INFORMATION REQUIRED FOR COUNTY PURPOSES. SEE THE RECORDED DOCUMENTS FOR MORE DETAILED LEGAL INFORMATION. THE AERIAL PHOTOGRAPHY WAS FLOWN BY FRANKLIN COUNTY IN SPRING 2017. MAP CREATED BY THE FRANKLIN COUNTY GIS DEPARTMENT AT 641.456.6045 OR GIS@CO.FRANKLIN.IA.US.