



Maple Cabin Features

- (18' X 20' cabin) 360 sq. ft.
- **Sleeps 4**, 1 double bed & 1 double hide-a-bed couch
- Kitchen: microwave, refrigerator/freezer, electric range/oven, toaster, coffee pot, sink & countertop, hot & cold running water, table w/4 chairs
- Modern bathroom w/bathtub & shower
- **\$100.00 per night**



Pine Cabin Features *Handicap Accessible*

- (18' X 40' cabin) 720 sq. ft.
- Attached (8'x 16') 128 sq. ft. 4 Seasons Sun Room
- **Sleeps 8**, 1 Queen & 1 double bed & 4 roll-away beds
- Kitchenette - microwave, refrigerator/freezer, electric range/ oven, sink & countertop, hot & cold running water, table w/6 chairs
- Large dorm fridge in Sun Room
- Modern bathroom w/handicap accessible shower
- **\$125.00 per night**

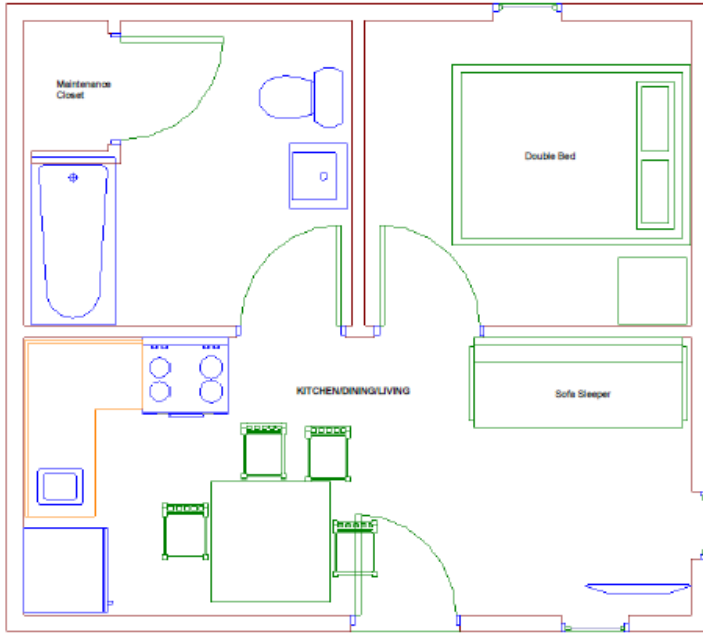


Oak Cabin Features

- (24' X 24') 1056 sq. ft. w/2 lofts
- **Sleeps 10-12**, 3 queen beds, 1 double bed & 2 double hide-a-bed couches
- Kitchenette - microwave, refrigerator/freezer, electric range/oven, toaster, coffee pot, sink & countertop, hot & cold running water, table w/6 chairs
- Modern bathroom w/bathtub & shower
- **\$150.00 per night**

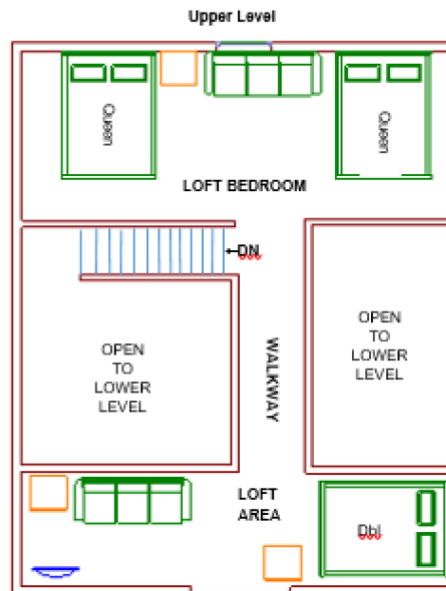
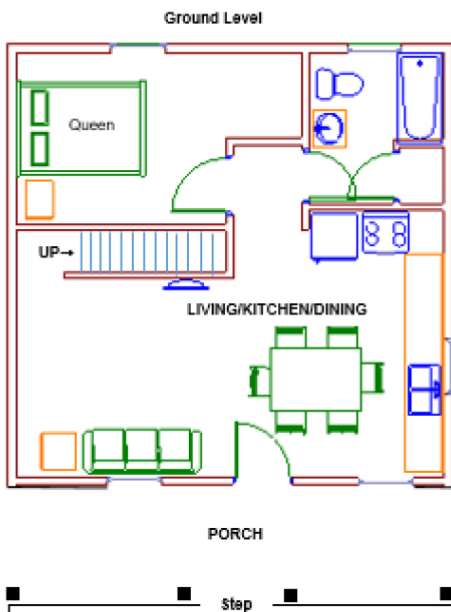
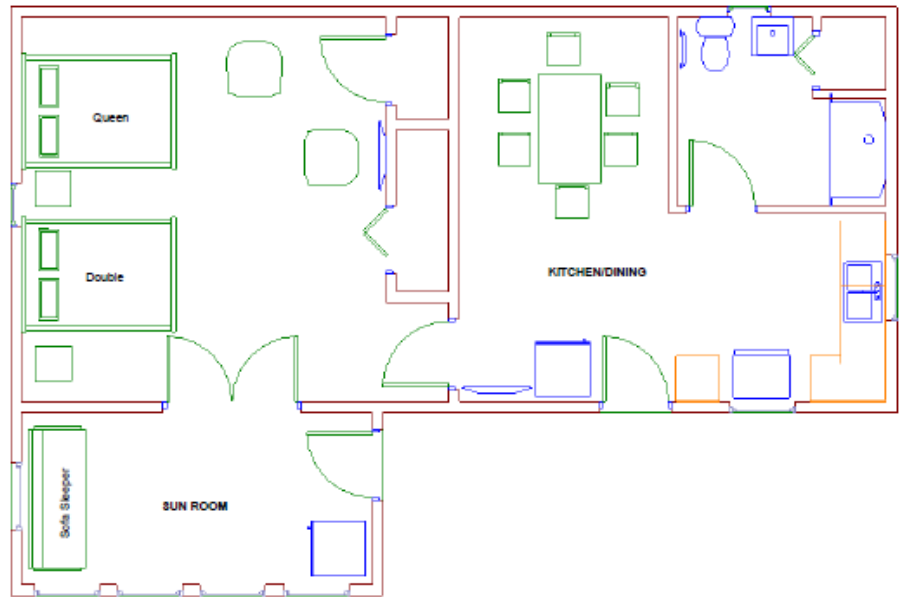
All Cabin Include:

- Heat & air conditioning, plus ceiling fans.
- A large covered porch on the front.
- Cable TV w/wireless internet service available.
- Picnic table & fire ring outside, parking nearby.
- 2 night minimum on weekends, 3 night minimum for inclusion of a holiday.
- Book 6 nights, 7th is FREE. **Master Card & Visa accepted.**



Maple Cabin Floor Plan

Pine Cabin Floor Plan
Handicap Accessible



Oak Cabin Floor Plan