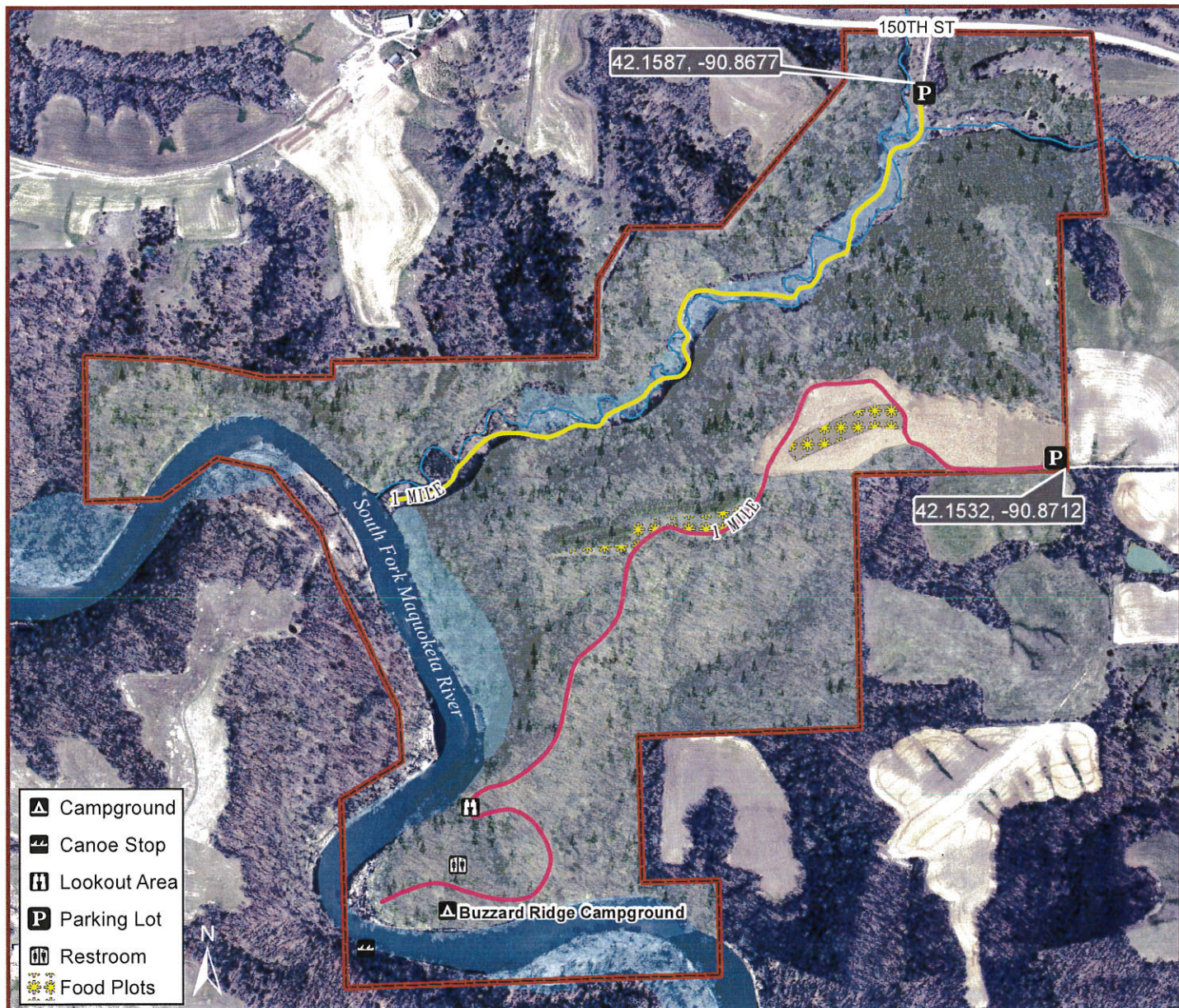


# Buzzard Ridge Wildlife Area

273 ACRES

The 273-acre area is located along the South Fork of the Maquoketa River. The unique beauty of Northeast Iowa is very evident here with limestone rock outcroppings, upland timber, floodplain wildlife and panoramic scenery. Wildlife food is planted to help supplement winter food sources.



Primitive, hike-in, tent camping is available by the river with restroom facilities nearby. Over two miles of hiking trail lead to lookout bluffs and stream fishing. Excellent opportunities for wildlife viewing and picnicking throughout. This area is a convenient stop for canoeists traveling down the Maquoketa River. Canoe stop is clearly marked and accessible to paddlers and hikers alike.

Buzzard Ridge can be accessed from a parking lot off County Road E17 just east of Canton and one off County Road 30th Avenue about 1/2 mile south of E17.

River access off the South Fork of the Maquoketa River between bridge in Canton and Millertown bridge on 30th Avenue. This is also part of the Maquoketa River Water Trail.

**Jackson County Conservation** 18670 63rd Street  
Maquoketa, IA 52060  
(563) 652-3783  
jacksonccb.com