

Cangleska Wakan

 **4045 245th St NE,
Solon, IA 52333**

Overview: Cangleska Wakan (*chan – gle' ska – wa kan'*) is a 132-acre park that features high quality oak forest and unique architecture, including several round barns, a stone arch, a stone amphitheater, and a brick labyrinth. Cangleska Wakan is a Lakota Sioux phrase that translates to 'Sacred Hoop' or 'Sacred Circle,' referring to the interconnectedness of all things. This property is adjacent to the 80-acre Big Grove Preserve, owned and managed by Bur Oak Land Trust.

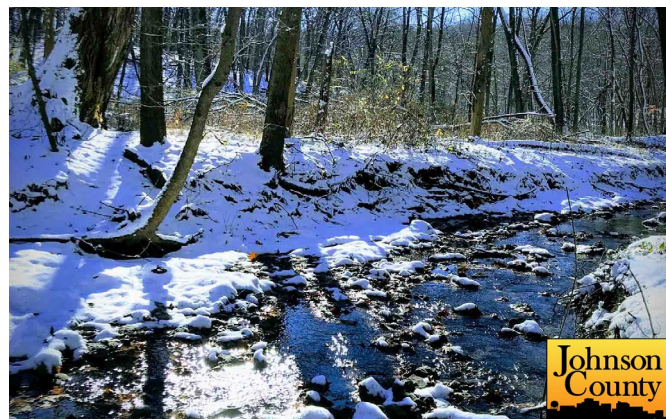
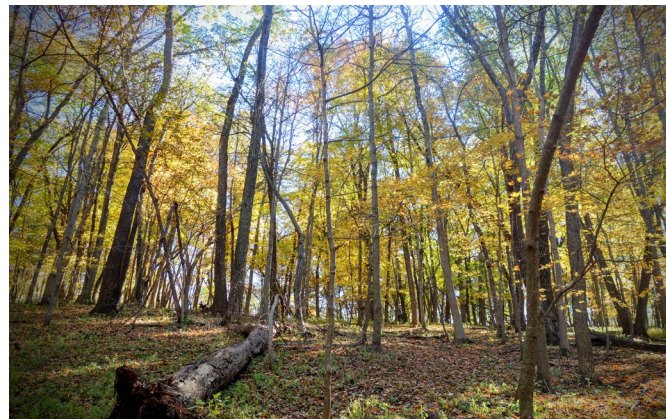
History: Cangleska Wakan was acquired by Johnson County Conservation (JCC) in 2018. The purchase was funded through the Johnson County Conservation Bond, established by county voters in 2008 to purchase and protect natural areas from development. JCC has been working on a master plan for this park's public use; the public can expect exciting changes and upgrades in years to come.

Features:

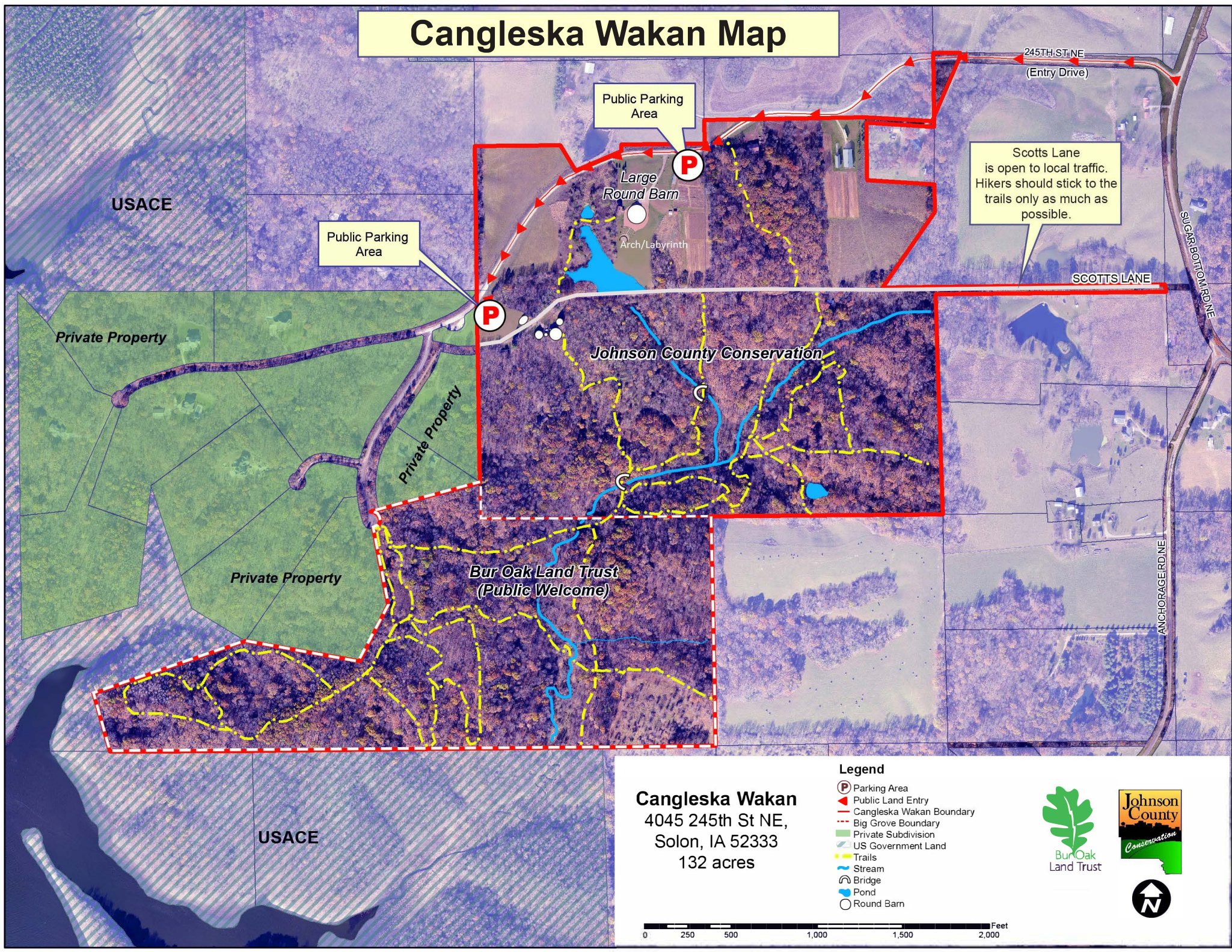
- The high-quality oak forest provides a fantastic place for birding and spring wild lower viewing. Hiking trails through the forests of Cangleska Wakan and Big Grove Preserve combine to create a 4+ mile trail network, all accessible to the public. Trails are for pedestrian use only.
- A brick labyrinth and stone arch stand out as unique features. The labyrinth is modeled after the famous labyrinth of Chartres, France, constructed in the 13th century. The stone arch is one of the largest free-standing, mortar-less arches in North America.
- The 100-foot diameter Celebration Barn is available to the public for special event rentals. At this time, the only modern restroom facilities are in the barn, and only accessible when the barn is unlocked and not reserved for private use.
- In coming years, several additional on-site features may become accessible to the public, including a working sawmill, an exquisitely restored 1925 caboose, a restored baggage wagon, a replica railroad hand pump cart, a collection of antique tractors and cars, and a local food operation.



Photo credit: Gerald Denehy



Cangleska Wakan Map



Public Parking Area

Public Parking Area

Scotts Lane is open to local traffic. Hikers should stick to the trails only as much as possible.

Private Property

Private Property

Private Property

Johnson County Conservation

Bur Oak Land Trust
(Public Welcome)

245TH ST. NE
(Entry Drive)

SCOTTS LANE

SUGARBOTTOM RD. NE

ANCHORAGE RD. NE

USACE

USACE

Cangleska Wakan
4045 245th St NE,
Solon, IA 52333
132 acres

Legend

- Parking Area
- Public Land Entry
- Cangleska Wakan Boundary
- Big Grove Boundary
- Private Subdivision
- US Government Land
- Trails
- Stream
- Pond
- Bridge
- Round Barn

