

No hunting or trapping is allowed at this time. In the future, there may be areas open to archery hunting for deer to help control negative impacts of deer over-population. Rules related to archery hunting will be considered in the next few years.

New County lands now open for public use include the large round barn, area around the pond, and approximately 74 acres of timber. When the property attains its full size in December 2019, the three round barns near the west parking area will be added to the collection. These uniquely shaped barns will not be accessible to the public until sometime in 2019. Please do not access these structures as they are currently under private lease.

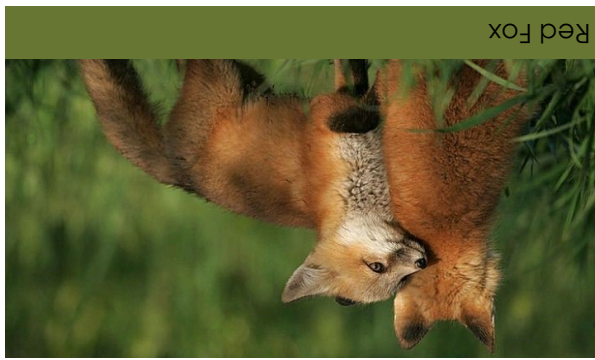
In coming years, several additional onsite features may become accessible to the public: a working sawmill, exquisitely restored 1925 caboose, restored baggage wagon, replica railroad handpump cart, collection of antique tractors and cars, and the local food operation. These features will provide outstanding educational opportunities for visitors of all age groups.



## A Brief History of the Project

In April 2018, Dick Schwab and Katherine Burford completed legal arrangements to transfer, through donation and sale, 132 acres of their land and its holdings to the Johnson County Conservation Board. These holdings will become fully owned by Johnson County in December 2019. In the meantime, 96 acres are now open for limited use by the public, with the remaining lands temporarily held in trust by the Iowa Natural Heritage Foundation.


These lands include many unique features that combine art, architecture, and the environment with a variety of natural, cultural and historical resources. The land is also adjacent to the Bur Oak Land Trust's 80-acre Big Grove Preserve, and very close to the Coralville Lake lands managed by the U.S. Army Corps of Engineers, both of which effectively increase the size of the new natural area.



Today's visitors may be greeted by the songs of numerous migrating and nesting birds, a glimpse of a fox, raccoon, woodchuck or deer, the beauty of native wildflowers such as Snow Trillium, Spring Beauty, Rue Anemone, and Blue Cohosh, and the buzz of insects feeding on and pollinating the plants. Managers of land preserves must work relentlessly to remove invasive species such as honeysuckle, autumn olive, garlic mustard, and oriental bittersweet from overtake the woodlands. These non-native species alter plant communities to a point that native plants and wildlife are diminished. Controlling invasives is and will be a major focus on the newly purchased land.

## Park Rules

- This area is "carry in - carry out" referring to trash - please don't litter
  - Keep all pets on leash and clean-up after them
  - Park only in designated parking areas
  - Speed limit is 25 mph on the entry road
  - Area opens 1/2 hour before sunrise and closes at 10:30 PM
  - Please do not enter the greenhouses or local foods production area
  - Respect private property and do not venture onto adjacent private lands
  - No swimming in the ponds
  - No hunting or trapping
  - Camping is not permitted
- For a complete list of rules and regulations, or if you have any questions about management of this site, please use the contact information listed below.

 **Johnson County Conservation**  
 2048 Highway 6 NW  
 Oxford, IA 52322  
 Phone: 319-645-2315

 /JohnsonCountyConservation  @JCCConservation

**Help us save trees!**  
 Please return this brochure if you are no longer using it.

Much of the new County and Big Grove Preserve lands are remnants resembling the open woodlands and savanna that intertwined with Eastern Iowa's prairies 200 years ago. These pockets of large oaks and hickories housed a great diversity of native plants and birds and mammals (such as today's red-headed woodpeckers, blue jays, and multiple squirrel species) that feed on tree's protein-rich acorns and hickory nuts.

The County's new Schwab-Burford acquisition shares a boundary with the 80-acre wooded Big Grove Preserve, owned and managed by the Bur Oak Land Trust. Johnson County Conservation and the Trust are working together on land management so visitors can have a seamless experience when walking between the two properties. Trails in the new acquisition lead directly to the hiking trail system through the Big Grove Preserve (see map on reverse side). Together, the two preserves currently offer 2.5 miles of mostly forested public trails. When hiking or exploring the area, please take extra precaution to make sure you are on property open to the public.

## Management of Natural and Cultural Resources

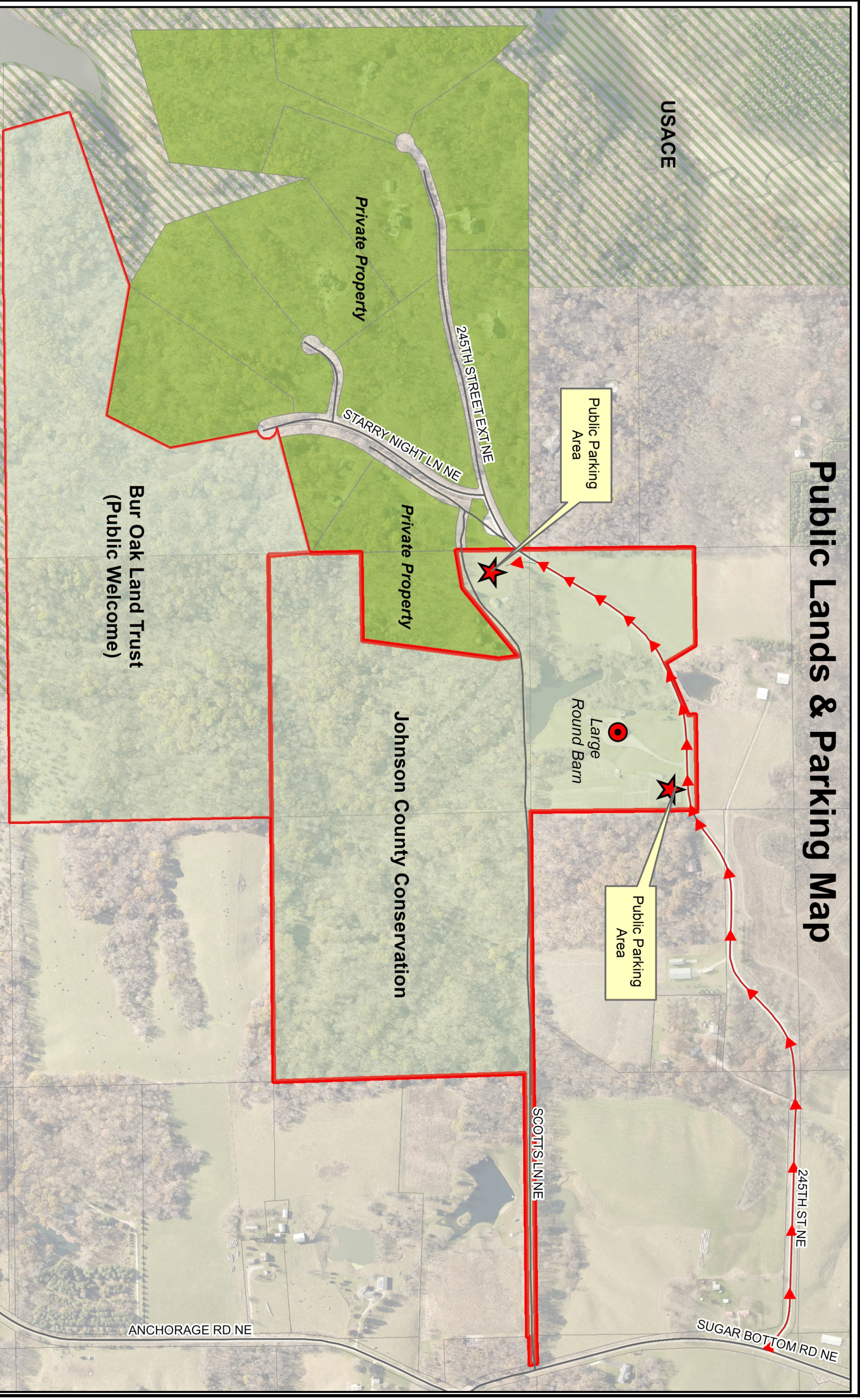


## Johnson County Conservation SCHWAB/BURFORD ACQUISITION



4045 245th Street, Solon, IA 52333

# Public Lands & Parking Map



## Trails

Approximately 2.5 miles of hiking trails are maintained through the forest community and this includes trails on the County managed and Bur Oak Land Trust properties. The trails are managed so park users can enjoy both land holdings with a single trail system.

The trails are for pedestrian use only, no motorized vehicles or off road bicycles are allowed. This helps protect the fragile slopes and plant life. Please park in the designated parking areas and walk to the trailheads.

## Restrooms

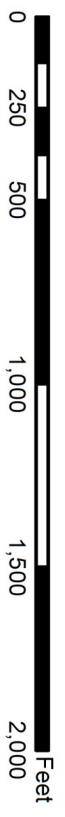
The only modern restroom facilities are located inside the large round barn. If the barn is not reserved and if it is unlocked, visitors may use these restroom facilities. If the barn is reserved for a special event or if it is locked, visitors must use the portable toilet, located at the west parking area.

## Labyrinth

The labyrinth is located at the base of the stone arch, south of the large round barn. The structure is modeled after the famous labyrinth in Chartres, France, constructed in the 13th century.

## Stone Arch

The stone arch, located south of the large round barn, is one of the largest mortarless arches in North America. It is free-standing and only pinned on the ground-connecting slabs. Arches have a universal meaning that transcends cultures—when one passes through the arch they are leaving the past behind and entering a new stage in their life. Climbing on the arch is not allowed.



Date: 5/8/2018